

Arlington High School

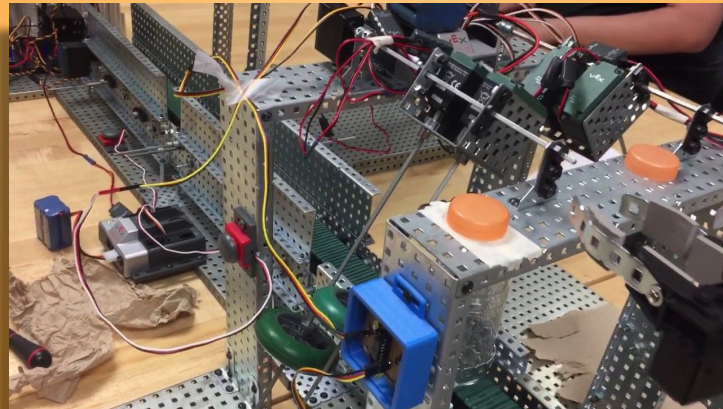
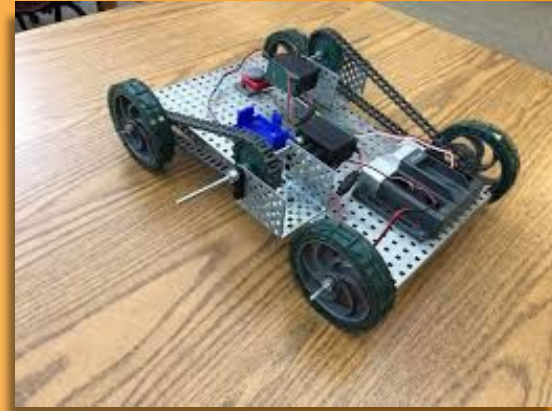
Technology & Engineering Department

Your pathways to success!

Engineering at Arlington High School

We use the Project Lead the Way curriculum at AHS, to offer college credit for each course we teach. Students use the college credits as transfer credits to the college or university they attend.

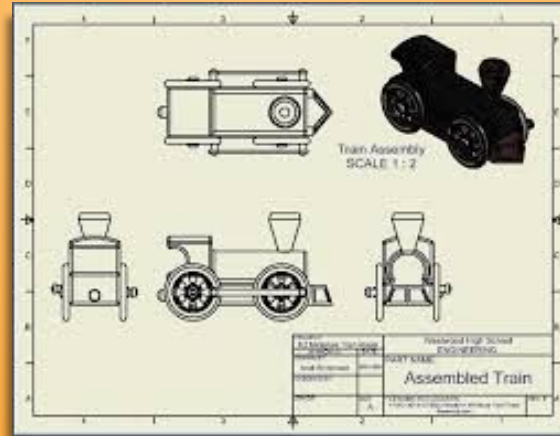
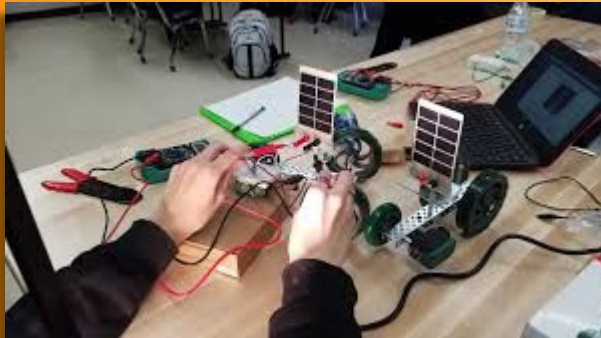
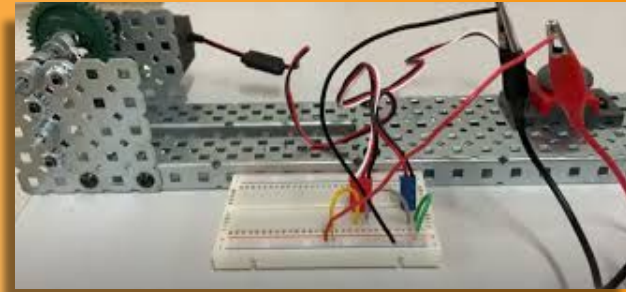
Our engineering students learn how to problem solve, are engaged in fun, real-world challenges that help them become better collaborators and thinkers, and are prepared with skills to step into any career path they take.



Engineering Classes



Introduction to Engineering
Principles of Engineering
Computer Integrated Manufacturing
Digital Electronics
Civil Engineering & Architecture
Engineering Design & Development
(Senior Capstone Course)



Author	Project Lead The Way
Editor	Project Lead The Way
Reviewer	Project Lead The Way
Approved	Project Lead The Way
Version	1.0
Date	1/1/2010
Page	1 of 1

Assembled Train



Digital Media at Arlington High School

The Digital Media Pathway courses introduce an exciting opportunity for students to explore and become well-rounded with the fundamentals of communication technology, digital photography, graphic design, digital filmmaking, broadcast TV, and media analysis.

Students gain hands-on experience by working with professional digital media equipment, learning about industry standard techniques, examining career strategies, gaining insight into the importance of job performance, and developing and editing for publication.



Digital Media Classes

*Communications Systems
Audio and Recording Production
Video Production
Television Production
Digital Photography
Advanced Photography
ABC Morning News Crew*



Career and Technical Classes

- Wood Production
- Metal Production
- Transportation
- Land Transportation
- Consumer Automotive
- Materials Processing
- Construction 1
- Construction 2
- Advanced Manufacturing
- Design & Drawing for Production
- Furniture and Cabinetmaking
- Basic Electricity and Electronics
- Engineering Drawing & Design
- Jewelry Design
- Basic Photography
- Digital Photography
- Advanced Photography
- Energy and Power Technology
- Career and Financial Management

Photography Classes



Basic Photo
Digital Photo
Advanced Photo



Adobe
Photoshop



Automotive Technology Classes

*Transportation Systems
Land Transportation
Consumer Automotive*



Career and Technical Education Pathways (CTE)

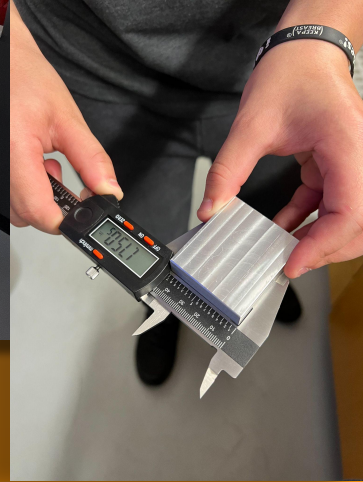
We believe that academic success is integrated with real world skills and experience- giving you a head start on college and a career.



Carpentry Pathway



Manufacturing Pathway



Courses in Each Pathway

	Carpentry	Advanced Manufacturing
Course #1	Career and Financial Management (0.5)	
Course #2	Design & Drawing for Production 1 (0.5)	
Course #3	Design & Drawing for Production 2 (0.5)	
Course #4	Wood Production (0.5)	Material Processing (0.5)
Course #5	Construction 1 (0.5)	Metal Production (0.5)
Course #6	Construction 2 (0.5)	Advanced Manufacturing (1.0)
Course #7	Furniture and Cabinetmaking (1.0)	

Students who graduate from a CTE program

- Continue at a college or university
- Go directly into the workplace
- Select technical training programs, apprenticeships or schools that specialize in their chosen field
- Some combination of all of the above

What should you do next?



Scan the QR Code to fill out the interest form. You will get a copy for your records and for your scheduling meeting.

Talk to your guidance counselor, teachers and parents/guardians about this.